

If you think a plant is giant hogweed:

1. PROTECT:

Don't touch it. Skin exposed to giant hogweed sap and sunlight can be severely burned. If it touches your skin, immediately:

- Wash with soap and water
- Protect the area from sunlight for 48 hours

2. IDENTIFY:

See DEC's website. Take photos of the entire plant (stem, leaves, flower, seed). High resolution preferred.

3. REPORT:

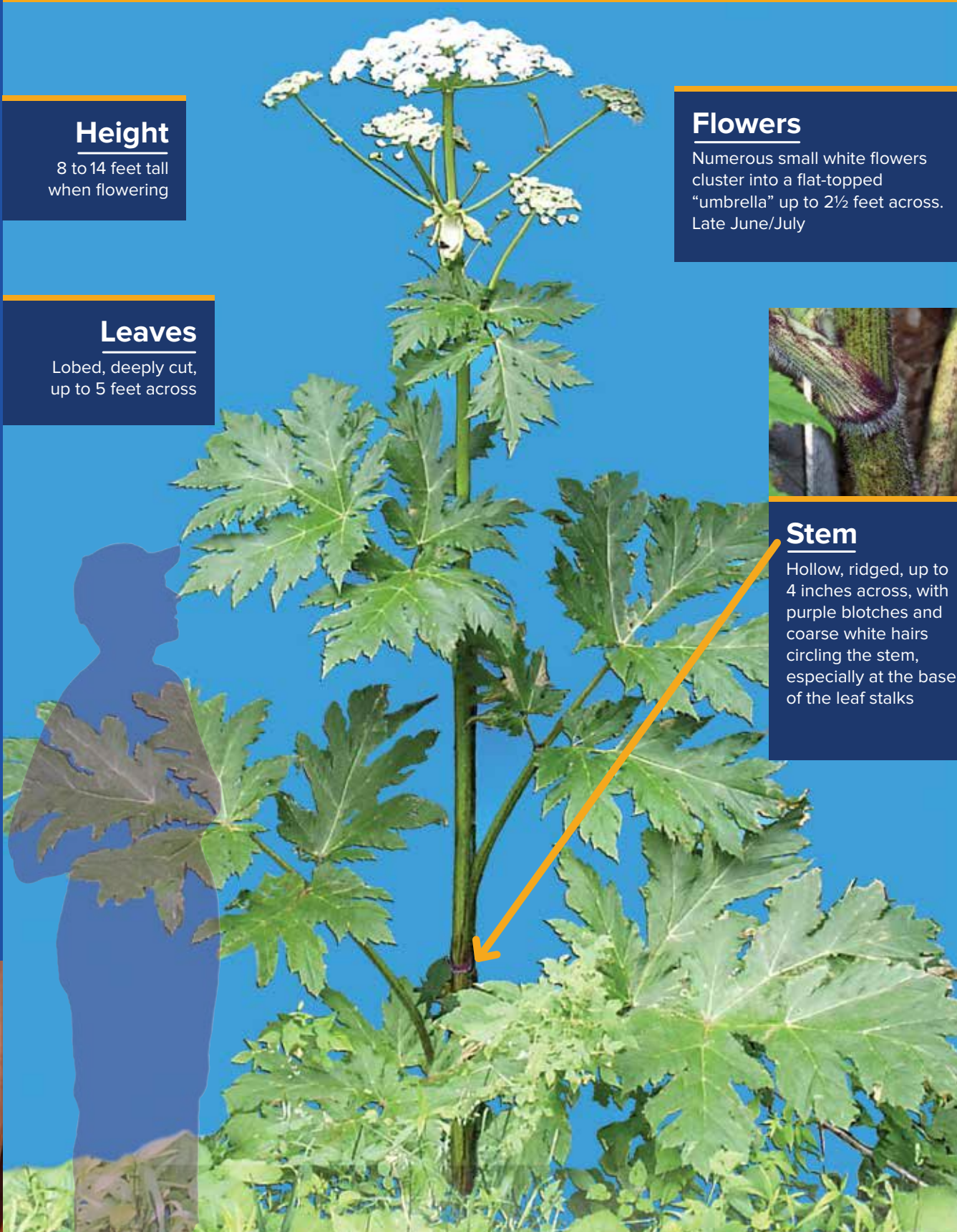
Attach photos and e-mail ghogweed@dec.ny.gov or call the Hogweed Hotline at 1-845-256-3111.

If giant hogweed is confirmed, DEC will contact the landowner to discuss control options.



BEWARE OF GIANT HOGWEED

Don't Touch This Plant!



Height

8 to 14 feet tall when flowering

Flowers

Numerous small white flowers cluster into a flat-topped "umbrella" up to 2½ feet across. Late June/July

Leaves

Lobed, deeply cut, up to 5 feet across

Stem

Hollow, ridged, up to 4 inches across, with purple blotches and coarse white hairs circling the stem, especially at the base of the leaf stalks

DEC is working hard to control giant hogweed.



Spraying with herbicide



Cutting the plant root



Removing seed heads

Its sap can cause painful burns, permanent scarring and even blindness.

PLANTS OFTEN MISTAKEN FOR GIANT HOGWEED



Cow Parsnip
May cause burns.



Angelica
May cause burns.



Queen Anne's Lace



Wild Parsnip
DON'T TOUCH! CAN CAUSE SEVERE BURNS.

Giant hogweed is an invasive, non-native plant classified as a noxious weed. It is unlawful to propagate, sell or transport. In addition to being a health concern, it crowds out other plants and causes soil erosion.

See DEC's website for a printable brochure, more information, and how you can help.



Scan the above QR code with your smartphone or visit www.dec.ny.gov/animals/39809.html

ghogweed@dec.ny.gov
Giant Hogweed Hotline: 1-845-256-3111

Division of Lands and Forests
Forest Health and Protection
21 South Putt Corners Road
New Paltz, NY 12561



This institution is an equal opportunity provider.